

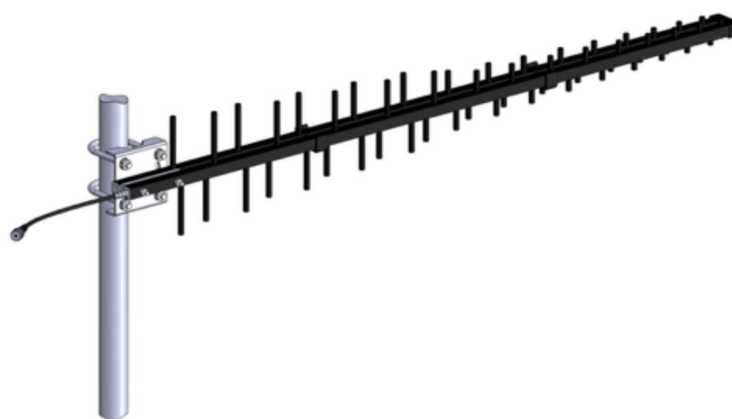
# 72412020

## Log Periodic Antenna 617-960 / 1710-2700 / 3300-4200

V-Pol 1-port  
12/14/10dBi  
617-4200MHz

Preliminary

Type	72412020			
Frequency Range (MHz)	617-698	698-960	1710-2700	3300-4200
Gain (dBi, typ.)	11.7	12	13.7	9.5
VSWR	≤ 2.5	≤ 1.8	≤ 2.0	≤ 1.8
Polarization	Vertical			
PIM3 (dBc), @2x43dBm	≤ -153			
Horizontal Beamwidth (°)	57	55	49	76
Vertical Beamwidth (°)	47	46	38	53
Front-to-Back Ratio (dB)	20	22	25	19
Input Impedance (Ω)	50			
Max. Input Power (W)	250			
Lightning Protection	All metal parts are DC grounded, the inner conductor is capacitive coupled to ground			
Connector Type	4.3-10 Female			
Dimension (mm)	1115 x 234 x 72			
Weight (kgs)	1.1 (Antenna) / 0.2 (L-Bracket)			
Max Wind Velocity (km/h)	200			
Ingress Protection	IP65			
Reflector Material	Aluminium			
Operating Temperature (°C)	-40 to +65			
Mounting	L-bracket for pole mount (Ø38-Ø52) included			



### Typical Radiation Patterns

