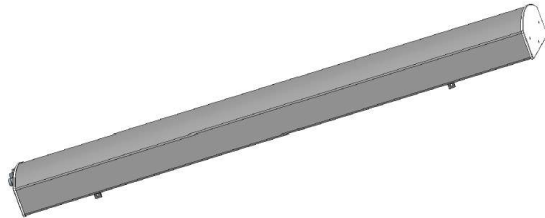


80011253

Features & Applications

- 2-Ports 1L Antenna, 1x380-500MHz
- 65° 15dBi 2.05m
- E-Tilt: 0°



Electrical Specifications		
Frequency Range (MHz)	380-450	450-500
Polarization	±45°	
Electrical Downtilt (°)	0, Fixed	
Gain (dBi)	14	14.5
Horizontal Power Beam Width (°)	70±5	68±5
Vertical Power Beam Width (°)	19±2	17±2
Front-to-Back Ratio (dB)	≥23	
Port-Port Isolation(dB)	≥26	
Cross-Polar Discrimination (dB)	≥30	
Impedance (Ω)	50	
VSWR	<1.5	
Intermodulation IM3 (2×43dBm carrier)	≤ -150dBc	
Maximum Power (W)	400	
Peak Instantaneous Power (KW)	25	
Ground Protection	DC GROUND	

Values based on NGMN recommendations on Base Station Antenna Standards_v11.1 (BASTA_v11.1)

80011253

Mechanical Specifications	
Connector	2 x 7/16DIN Female
Connector Position	Bottom
Antenna dimensions (H x W x D) (mm)	2050x450x145
Packing dimensions (H x W x D) (mm)	2310x510x265
Antenna weight (kg)	20/24.5 (clamps incl.)
Radome material	Fiberglass
Radome color	Gray
Operational temperature (°C)	-40 to +75
Wind Load@150km/h Frontal /Lateral/Rear side (N)	826/163/1052
Max. operational wind speed (km/h)	200
Diameter of installation pole	50 ~115 mm
Mechanical Tilt (°)	0-10
Mounting kit	included

Layout and Pattern

Connector Position :



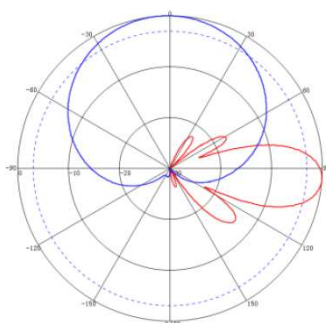
Configuration Types:



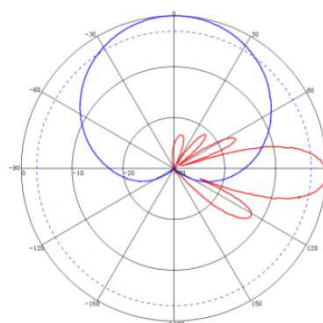
R1 : 380-500MHz

Pattern sample for reference :

380-450 MHz: ±45° Pol.



450-500 MHz: ±45° Pol.



Installation diagram

	<p>1. Install the M12 bolt and u-shape clamp on the upper and lower brackets and pre-tighten the M12 nuts. Fastening the brackets to the back of the antenna with M10 bolt, torquing the nut to 25N.m</p>
	<p>2. Tightening the scale to the upper bracket with the M16 nut, fix the scale to 0° position, torquing the nut to 8N.m</p>
<p>3. Installing the antenna vertically to the support pole using M12 bolt, torquing the nut to 40N.m</p>	<p>4. Loosing the scale fixing nut on the upper bracket, adjusting the mechanical downtilt angle of the antenna to the suitable angle base on the scale display, then tightening the scale and all the nuts on the bracket</p>

Note: The picture is for reference only, the specific subject to prevail in kind.