

ECOSC2Y2P/2S

BIDIRECTIONAL Small Cell Canister Antenna

4-port x 1695-2700 MHz
 4-port x 3300-4200 MHz
 HPBW : 70 °, 70 °
 Gain : 11.8 dBi, 10.9 dBi

Electrical specifications

Port Information	Y1-Y2			
Frequency Range (Mhz)	1695-1920	1920-2180	2305-2360	2360-2700
Gain Max. (dBi)	9.6	11.3	11.5	11.8
Gain Avg. (dBi)	8.6	8.8	10.4	10.2
Horizontal Pattern				
Azimuth Beam width (°)	94	73	62	62
Vertical Pattern				
Elevation Beam width (°)	17	15	13	12
First Upper Side Lobe Suppression (dBi)	13	13	13	13
Electrical Down Tilt	Fixed 2°			

Electrical specifications

Port Information	P1-P2		
Frequency Range (Mhz)	3300-3550	3550-3700	3700-4200
Gain Max. (dBi)	9.3	9.7	10.9
Gain Avg. (dBi)	8.3	9.2	9.9
Horizontal Pattern			
Azimuth Beam width (°)	80	70	61
Vertical Pattern			
Elevation Beam width (°)	16	16.1	13.8
First Upper Side Lobe Suppression (dBi)	13	13	13
Electrical Down Tilt	Fixed 2°		



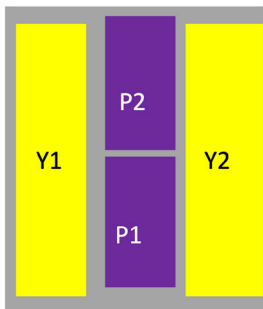
General specifications

Port information	Y1-Y2	P1-P2
Isolation (dB)	>20	
VSWR	1.5 : 1	
Polarization	±45	
Intermodulation IM3 (dBc)	-153(3rd Order, 2x20W)	-
Impedance (Ω)	50	
Max. Effective Power per Port (Watts)	100	

Mechanical specifications

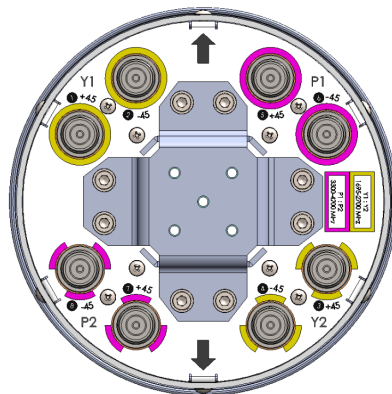
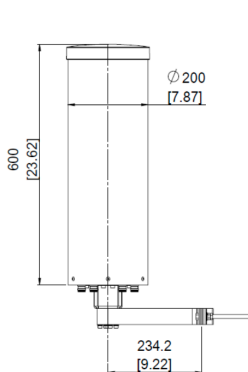
Connector Type & Quantity	8 x 4.3-10 Female
Connector Position	Bottom
Antenna Dimension (D x H) (inch / mm)	Ø 7.9 x 23.6 / Ø 200 x 600
Weight (without Mounting Kit) (lb / kg)	11 / 5
Wind Load (@100 mph) (N)	107
Max.Wind Speed (Survival Wind Speed) (mph)	150
Radome (Color)	ASA (Light Gray)

Array information

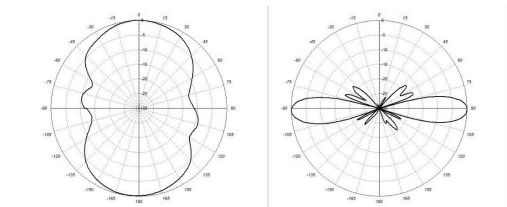


Array	Frequency(MHz)	Connectors
Y1-Y2	1965-2700	1-4
P1-P2	3300-4200	5-8

Outline



Pattern File_1695-2700 MHz



Pattern File_3300-4200 MHz

