

ECOSC2Y2P

Small Cell Pseudo Omni Canister Fixed Antenna

4-port x 1710-2690 MHz
 4-port x 3300-4200 MHz
 HPBW: 360°
 Gain: 9.4 dBi, 9.2 dBi

Electrical specifications

Port Information	Y1-Y2				P1-P2
Frequency Range (Mhz)	1710-1850	1850-1910	1910-2180	2300-2690	3300-4200
Gain Max (dBi)	9.4	9.1	9.3	9.4	9.2
Gain Avg (dBi)	8.9	8.8	8.8	9	8.5

Horizontal Pattern

Azimuth Beam width (°)	360				
GainOMNI Deviation (dB)	3.5	5	5	5	6

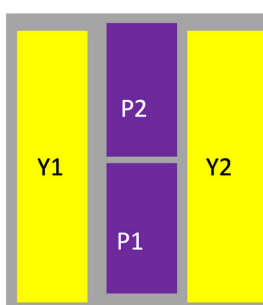
Vertical Pattern

Elevation Beam width (°)	16	16	15	14	15
First Upper Side Lobe Suppression(dB)	11				8

General specifications

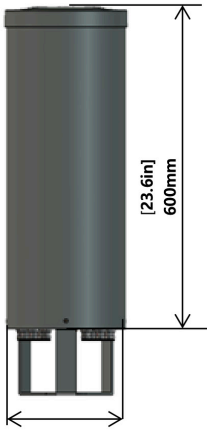
In-Band Cross Polar Port Isolation (dB)	>20				
Inter-Band Port Isolation (dB)	>25				
VSWR	1.5 : 1				
Polarization	±45°				
Intermodulation IM3 (dBc)	-153 (3rd Order, 2x20W)				-
Impedance (Ω)	50				
Max. Effective Power per Port (Watts)	100				

Array information

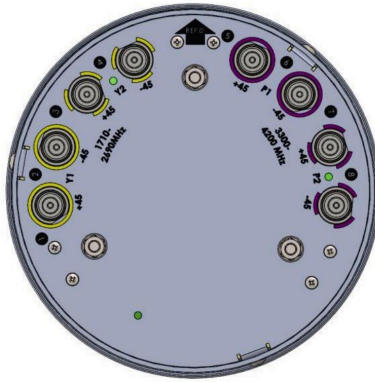


Array	Frequency(MHz)	Connectors
Y1-Y2	1710-2690	1-4
P1-P2	3300-4200	5-8

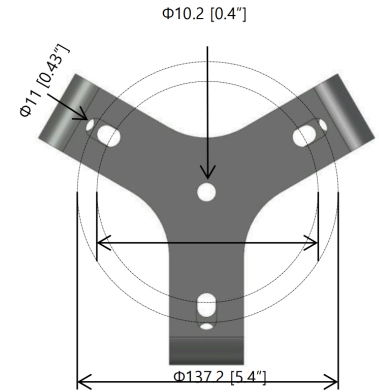
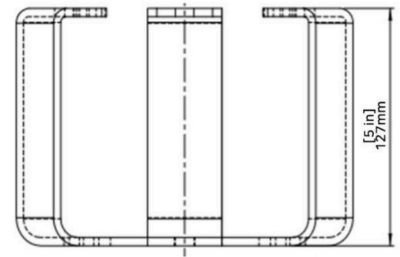
Outline



Bottom



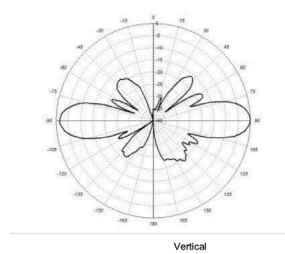
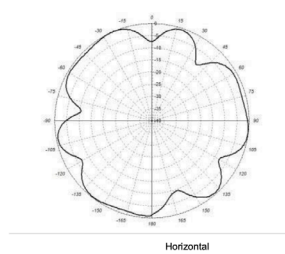
Bracket



Mechanical specifications

Connector Type & Quantity	8 x 4.3-10 Female
Connector Position	Bottom
Antenna Dimension (WxD) (inch / mm)	Ø 9.4 x 23.6 / Ø 240 x 600
Weight (without Mounting Kit) (lb/kg)	22.15 / 10.05
Wind Load (@100 mph) (N)	230
Max.Wind Speed (Survival Wind Speed) (mph)	150
Radome (Color)	ASA (Gray)

Pattern File_1710-2690 MHz



Pattern File_3300-4200 MHz

