

# 80013118

## MIMO Sector Antenna 15dBi / 3300-3800 Mhz

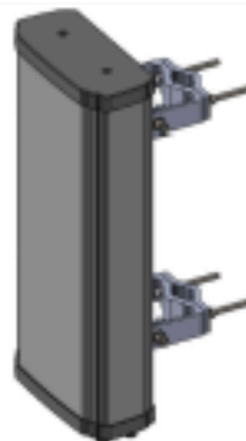
MIMO Sector Antenna  
15dBi  
3300-3800 Mhz

Electrical specifications (Default wide beam)	
Port Information	P1-P4
Frequency Range (Mhz)	3300-3800
Gain (dBi)	14.2
Horizontal Pattern	
Azimuth Beam width (°)	80
Front-to-Back Ratio (dB)	>23
Cross Polar Discrimination at Boresight (dB)	>15
Vertical Pattern	
Elevation Beam width (°)	7
Electrical Downtilt continuously Adjustable (°)	2-12
First Upper Side Lobe Suppression (dB)	>15

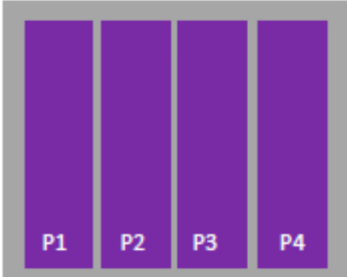
Electrical specifications (Service beam)	
Frequency Range (Mhz)	3300-3800
Gain (dBi)	18.7
Horizontal Pattern	
Azimuth Beam width (°)	23
Front-to-Back Ratio (dB)	>25
Cross Polar Discrimination at Boresight (dB)	>18
Vertical Pattern	
Elevation Beam width (°)	7
Electrical Downtilt continuously Adjustable (°)	2-12
First Upper Side Lobe Suppression (dB)	>15

Electrical specifications (Broadcast beam)	
Frequency Range (Mhz)	3300-3800
Gain (dBi)	15.3
Horizontal Pattern	
Azimuth Beam width (°)	65
Front-to-Back Ratio (dB)	>23
Cross Polar Discrimination at Boresight (dB)	>15
Vertical Pattern	
Elevation Beam width (°)	7
Electrical Downtilt continuously Adjustable (°)	2-12
First Upper Side Lobe Suppression (dB)	>15

General specifications	
Isolation (dB)	>25
VSWR	1.5: 1
Polarization (°)	±45
Intermodulation IM3 (dBc)	-153 (3rd Order, 2x20W)
Impedance (Ω)	50
Max. Effective Power per Port (Watts)	120



## Array information



Array	Frequency(MHz)	Connectors
P1-P4	3300-3800	1-8

## Mechanical specifications

Connector Type & Quantity	8 x 4.3-10 & 1 Cal. port
Connector Position	Bottom
Antenna Dimension (D x H) (mm)	300 x 150 x 800
Packing Dimension (W x D x H) (mm)	325 x 175 x 900
Weight (without Mounting Kit) (kg)	15
Packing Weight	18
Max. Wind Load (m/s)	60
Radome (Color)	ASA (Gray)

## Remote Electrical Tilt (RET)

Internal RET	GN-RETi(Replaceable internal RET)
Protocol	3GPP/AISG 2.0

