

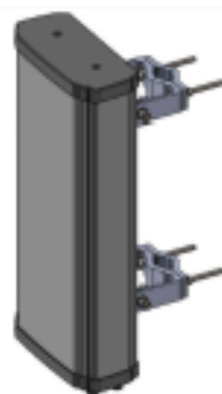
80013112

Directional panel antenna
8 x 1695-2690Mhz
4 x 3300-4200Mhz

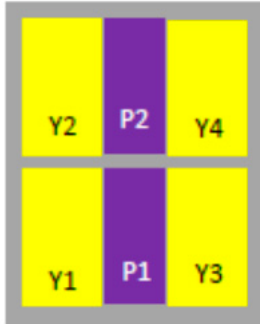
Directional Panel Antenna
 12-port 12/13dBi
 1695-4200MHz

Electrical specifications				
Port Information	Y1-Y4			P1-P2
Frequency Range (Mhz)	1695-2180	2300-2400	2496-2700	3300-4200
Polarization	+45%/ -45°			
Electrical Down tilt	2°, 4°, 6° Fixed			0° Fixed
Gain (max) (dBi)	11	11.3	12	13
Gain (avg) (dBi)	10.2	10.8	11.3	12.2
Horizontal Pattern				
Azimuth Beam width (°)	90	65	61	65
Vertical Pattern				
Elevation Beam width (°)	27	25	21	18

General specifications		
Port Information	Y1-Y4	P1-P2
Intra-Cluster Isolation (dB)	>23	
Inter-Cluster Isolation (dB)	>23	
VSWR	1.5: 1	
Polarization (°)	±45	
Intermodulation IM3 (dBc)	-153 (3rd Order, 2x20W)	N/A
Impedance (Ω)	50	
Max. Effective Power per Port (Watts)	150	



Array information



Array	Frequency(MHz)	Connectors
Y1-Y4	1695-2700	1-8
Y1-Y2	3300-4200	9-12

Mechanical specifications

Connector Type & Quantity	12 x 4.3-10 Female
Connector Position	Bottom
Antenna Dimension (D x H) (inch / mm)	10.7 x 24 x 4.6 / 270 x 609 x 116
Weight (without Mounting Kit) (lb / kg)	9.3 / 4.2
Wind Load (@100 mph) (N)	Front 183, Side 67, Rear 183
Max.Wind Speed (Survival Wind Speed) (mph)	150
Radome (Color)	ASA (Gray)

