

ECOSC2Y2P/2

BIDIRECTIONAL Small Cell Canister Antenna 4T4R

4-port x 1695-2700 MHz
and 3300-4200 MHz (Diplexer)
HPBW : 68 °, 60 °
Gain : 11.1 dBi, 10.7 dBi

Electrical specifications

Port Information	Y1-Y2			
Frequency Range (Mhz)	1695-1920	1920-2180	2305-2360	2360-2700
Gain Max (dBi)	10.3	10.9	11.1	11
Gain Avg (dBi)	9.7	10.3	10.8	10.3
Horizontal Pattern				
Azimuth Beam width (°)	70	70	68	65
Vertical Pattern				
Elevation Beam width (°)	17	15	13	12
First Upper Side Lobe Suppression(dB)	13	13	13	13
Electrical Down Tilt (°)	Fixed tilt 0 °, 2 °, 6 ° (Optional)			

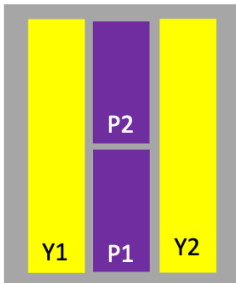
Electrical specifications

Port Information	P1-P2		
Frequency Range (Mhz)	3300-3550	3550-3700	3700-4200
Gain Max (dBi)	10.2	10.6	10.7
Gain Avg (dBi)	9.5	9.8	9.8
Horizontal Pattern			
Azimuth Beam width (°)	65	60	57
Vertical Pattern			
Elevation Beam width (°)	16	15	14
First Upper Side Lobe Suppression(dB)	13	13	13
Electrical Down Tilt (°)	Fixed tilt 0 °, 2 °, 6 ° (Optional)		

General specifications

Port information	Y1-Y2	P1-P2
Isolation (dB)	>20	
VSWR	1.5 : 1	
Polarization	±45°	
Intermodulation IM3 (dBc)	-153 (3rd Order, 2x20W)	-
Impedance (Ω)	50	
Max. Power per Port (Watts)	100	

Array information

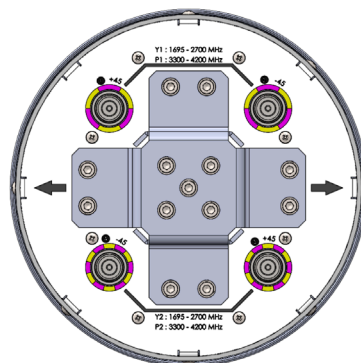
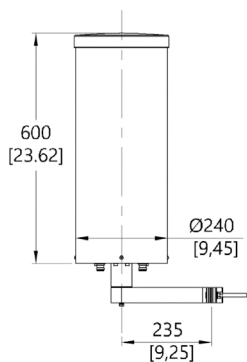


Array	Frequency(MHz)	Connectors
Y1/P1	1695-2700/3300-4200	1-2
Y2/P2	1695-2700/3300-4200	3-4

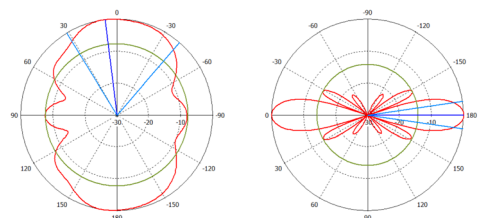
Mechanical specifications

Connector Type & Quantity	4 x 4.3-10 Female
Connector Position	Bottom
Antenna Dimension (WxD) (inch / mm)	Ø 9.4 x 23.6 / Ø 240 x 600
Weight (without Mounting Kit) (lb/kg)	15.4/ 7
Wind Load (@100 mph) (N)	127
Max.Wind Speed (Survival Wind Speed) (mph)	150
Radome (Color)	ASA (Gray)

Outline



Pattern File_1695-2700 MHz



Pattern File_3300-4200 MHz

